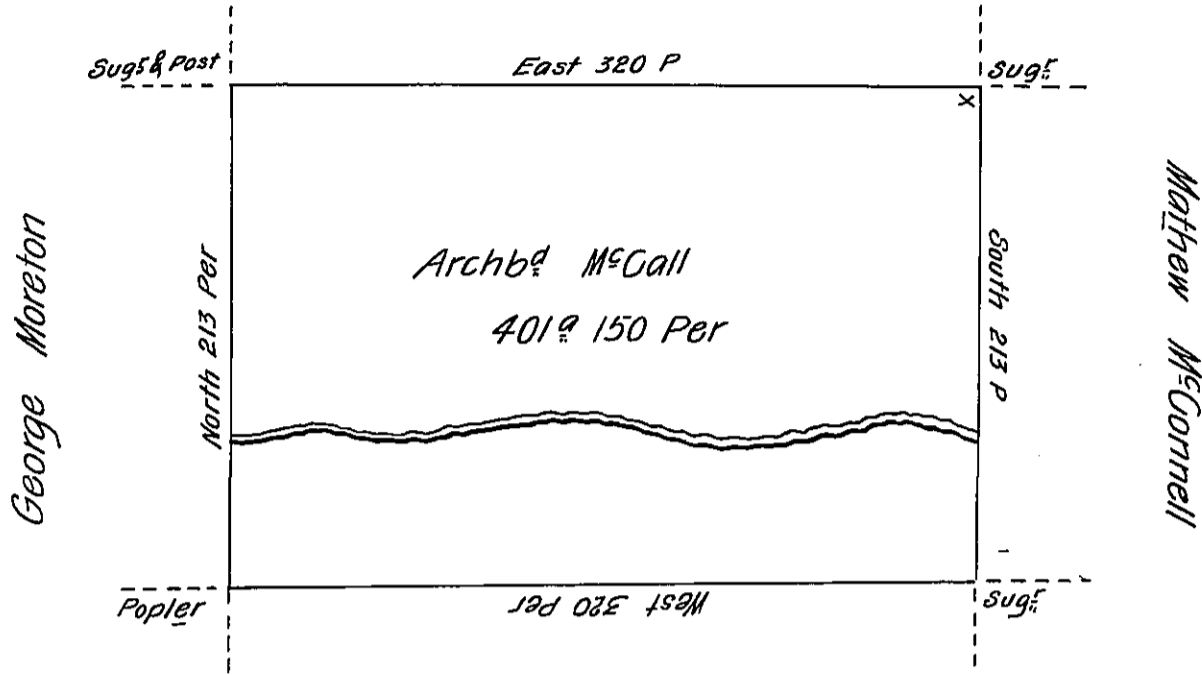


Martin Ludwig



Wm McMullin

Situate on the West side of French Creek in Allegheny County.

Containing 401 1/2 150 Perches & allowance of Six Per Cent for Roads &c.  
Surveyed the 1st day of June 1795. In Pursuance of a Warrant dated the  
30th day of May 1792.

Wm Power Dy. Sr

To Daniel Brodhead Esq  
Surveyor General.

IN TESTIMONY that the above is a copy of the original remaining on file in  
the Department of Internal Affairs of Pennsylvania, made  
conformably to an Act of Assembly approved the 16th day of  
February, 1833, I have hereunto set my Hand and caused  
the Seal of said Department to be affixed at Harrisburg,  
this second day of January 1906.

*Loach P. Power*  
Secretary of Internal Affairs.